

# Aravindar Enclave

32 Luxury Villa Plots!



"Seize the opportunity to own a premium villa plot in the heart of luxury – Limited plots available!"

Villa Plots

₹ **42L**

Onwards

Presented by  
**Amudha Civil Construction**



**82200 17200**

# Get to Know Us!

At AMUDHA CIVIL CONSTRUCTIONS PRIVATE LIMITED, our philosophy is, First of all, we build Trust; after that, we build buildings for our clients. Since founding on 26th January 2001, we've spent over 25 years establishing ourselves as leaders in the construction industry, delivering excellence with every project with our customers by delivering on our promises with over 250+ completed projects in a community of more than 650+ Happy Families, we are proud to be a trusted name in the construction industry.



## Our Vision

To be the premier construction company, recognized for our unwavering commitment to innovation, safety, and client satisfaction.

## Our Mission

To empower our clients with exceptional construction services that exceed expectations, fostering sustainable growth and thriving communities.



**25+**  
Years of  
Experience

**250+**  
Successful  
Projects

**650+**  
Happy  
Families

**400+**  
Benefitted  
Students










# Your Land, Your Future!

Aravindar Enclave offers you the freedom to design and build your dream home at your pace. Whether you are looking for a residential investment or a long-term asset, these plots provide the perfect foundation for a prosperous future.

## Why Choose Aravindar Enclave?

- ✓ **Strategic Location** - Excellent connectivity to key landmarks
- ✓ **Clear Title & Legal Approvals** – Hassle-free documentation and secure investment
- ✓ **Well-Planned Infrastructure** – Wide roads, street lighting, and drainage systems
- ✓ **Green & Serene Environment** – Landscaped gardens and eco-friendly surroundings
- ✓ **Ready for Construction** – Plots designed to accommodate modern homes



-  **Location:** Medavakkam - Sithalapakkam
-  **Total Project Area:** 1.5 Acres
-  **Plot Sizes:** 806 - 2677 Sqft
-  **Development Status:** Completed
-  **Legal Approvals:** CMDA & RERA Approved



# Enhancing Your Living Experience With Premium Facilities



Children's Play Area



CCTV Monitoring



Grand Arch Entrance



Overall Compound Wall



Black Top Roads



TNEB Electricity Poles & Lights



Solar Lamp Posts



24x7 Security Guard



30FT Main Road



24FT Secondary Road



Tree Lined Road



Good Sources of Ground Water



EB Connection



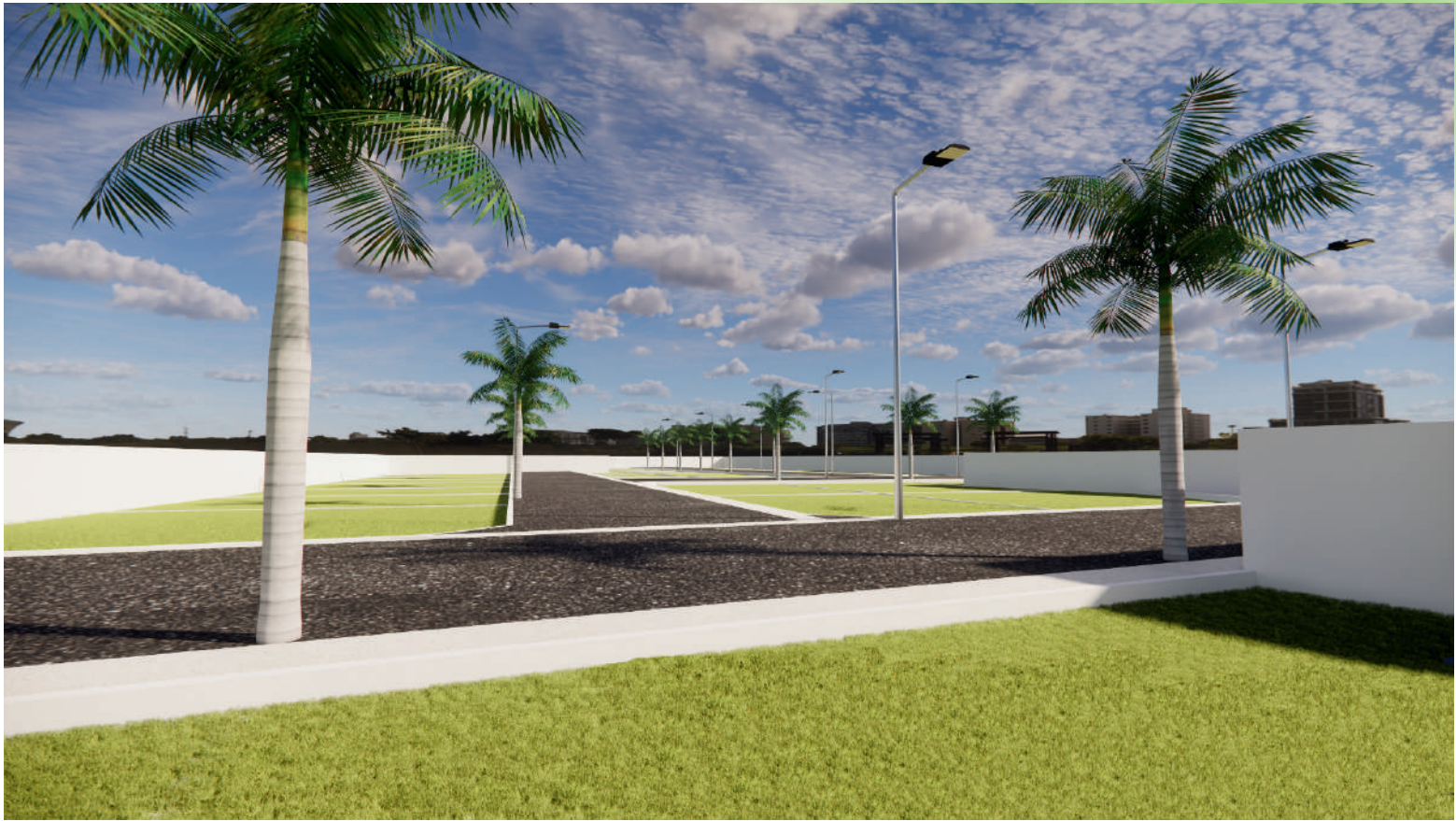
Storm Water Drain



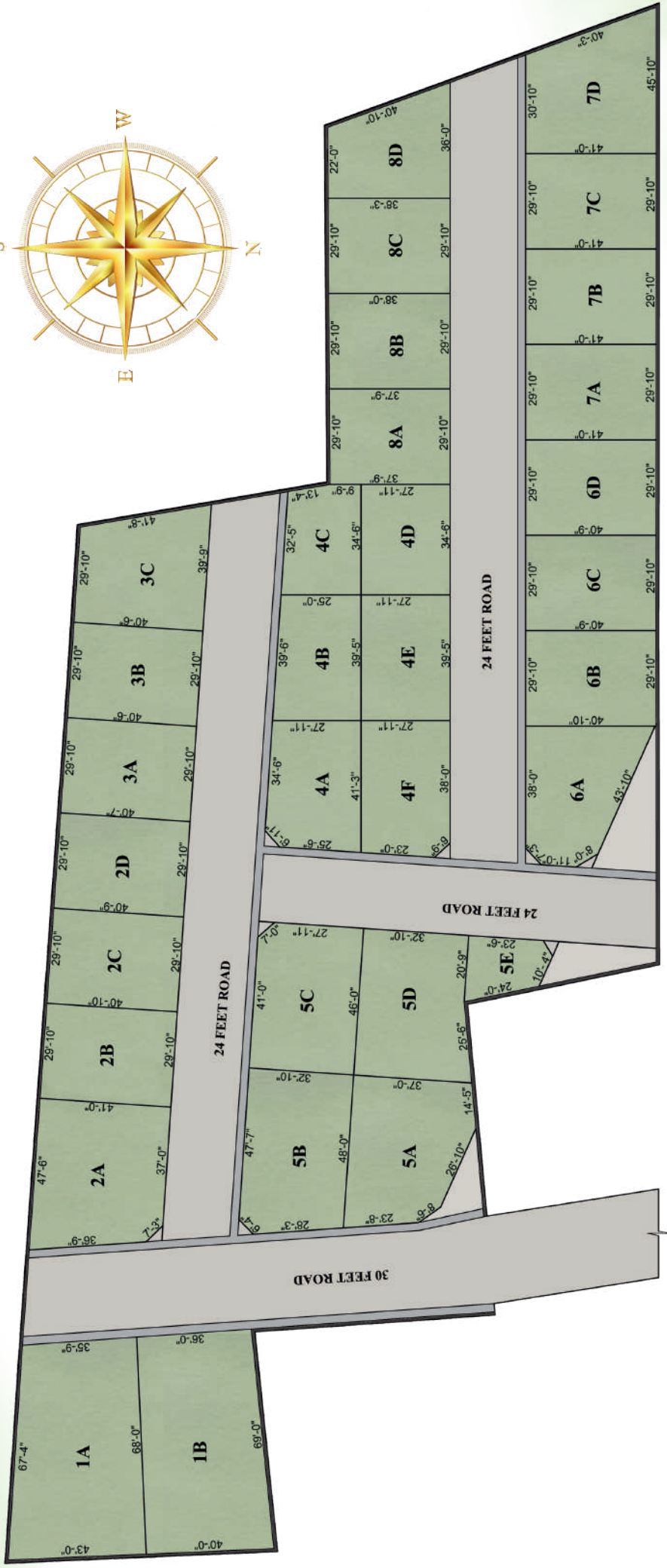
Landscaped Layout











## LAYOUT PLAN:

Aravindar Enclave is an exclusive CMDA & RERA-approved residential plotted development offering **32 premium plots** in a well-planned & thriving location. Designed for investment and future-ready living, our project features well-laid roads, modern infrastructure, and excellent connectivity to key landmarks. **Secure your plot today** and build your dream home in a **fast-growing, high-appreciation zone!**



## ARAVINDAR ENCLAVE

PLOT NO	SQ.FT	PLOT NO	SQ.FT
1A	2677.5	5B	1634.5
1B	2609.5	5C	1465
2A	1810	5D	1561
2B	1214.5	5E	460
2C	1214.5	6A	1313.5
2D	1214.5	6B	1218
3A	1212.5	6C	1216.5
3B	1210	6D	1220
3C	1410	7A	1223.5
4A	1166	7B	1224
4B	1040	7C	1224
4C	806.5	7D	1570
4D	960.5	8A	1126.5
4E	1198	8B	1131
4F	1163.5	8C	1141
5A	1594	8D	1114



# Seamlessly Connected to Everything

You Need!



## Near by Hospitals

- Gleneagles Health City - 10Mins
- Kamatchi Memorial Hospital - 10Mins
- Chettinad Super Speciality - 20Mins
- ABC Hospital (24 Hrs) - 5Mins
- Rajan Hospital (24 Hrs) - 5Mins
- Tagore Medical College & Hospital - 21Mins



## Near by Schools

- Sri Chaitanya School - 20Mins
- Vels global School - 14Mins
- BVM Global CBSE School - 9Mins
- Sairam School - 10Mins
- Orchids International School - 12Mins
- Zion School - 20Mins



## Near by Colleges

- VIT Chennai Campus - 25Mins
- St.Joseph's Institute of Technology - 22Mins
- Sathyabama University - 15Mins
- Agni College of Technology - 14Mins
- Tagore Medical College & Hospital - 21Mins
- Madras Christian College - 30Mins
- Crescent College - 35Mins



## Near by Offices

- TCS - 23Mins
- Infosys - 22Mins
- Cognizant - 20Mins
- HCL - 24Mins
- Accenture - 26Mins
- Sipcot IT Park - 24Mins



## Near by Place

- Arasankazhani Bus Stop - 4Mins
- Sithalapakkam Bus Stop - 6Mins
- Medavakkam Koot Road - 15Mins
- Medavakkam Metro (Upcoming) - 15Mins
- OMR Navalur - 20Mins
- Semmancheri Bus Stop - 10Mins
- Perumbakkam Junction - 15Mins
- Sozhinganallur Junction - 20Mins
- Tambaram Railway station - 30Mins
- Kilambakkam Bus Terminus - 35Mins



## Near by Entertainments

- Vivira Mall - 20Mins
- Marina Mall - 23Mins
- Mayajaal - 35Mins
- MGM - 37Mins
- Vandalur Zoo - 38Mins
- AGS Cinemas - 23Mins
- Inox Theatre - 27Mins
- Varadharaja Cinemas - 35Mins
- PVR - 37Mins
- Golden Beach - 39Mins





# Amudha's Ongoing Projects:



## **SERENITY - SALIGRAMAM**

Flat Type: 2 & 3 BHK Flats | No of Units: 28 Units

Price: **1.33Cr** Onwards



## **ORCHID - SITHALAPAKKAM**

Flat Type: 2 BHK Flats | No of Units: 6 Units

Price: **57L\*** Onwards



## **AYODHYA - SITHALAPAKKAM**

Flat Type: 2 BHK Flats | No of Units: 6 Units

Price: **64L\*** Onwards



## **EMERALD - SITHALAPAKKAM**

Individual Duplex Villa: 3 BHK | No of Units: 1 Unit

Price: **93L** Only

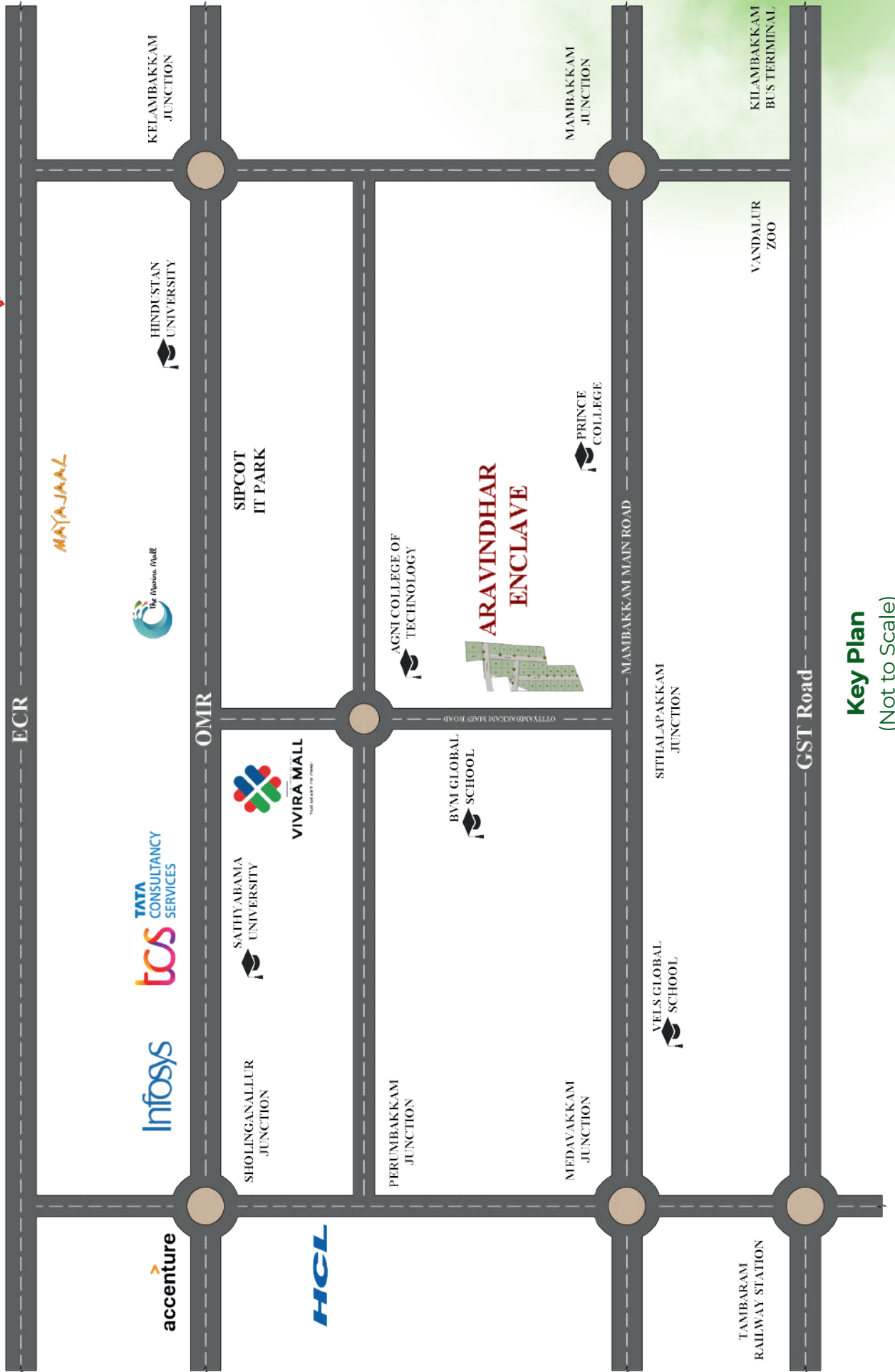


## **SRIPURAM NIWAS II - GOWRIVAKKAM**

Flat Type: 2 & 3 BHK Flats | No of Units: 9 Units

Price: **68L\*** Onwards





**Key Plan**  
(Not to Scale)





# Thank You!

By

AMUDHA CIVIL CONSTRUCTION PVT LTD

 **+91 82200 17200 / 70921 00090**

 [contact@amudhaccpl.com](mailto:contact@amudhaccpl.com)  [www.amudhaccpl.com](http://www.amudhaccpl.com)



No.161 & 162, Amudha Square, Kamaraj Avenue, Ottiyambakkam Main Road, Sithalapakkam, Chennai - 600 131.