

# Amudha's - SSR Pankajam SERENITY



*Welcome to Express  
Your Lifestyle Declaration*

RERA NO : TN / 29 / BUILDING / 025 / 2024  
CMDA/PP/NHRB/C/0323/2023

## ***SERENITY***

**28 Lifestyle Apartments @  
SALIGRAMAM  
( 1028 to 1476 Sq.ft )**

**Site Address :  
SSR Pankajam Road  
Saligramam, Chennai  
( Off Arunachalam Road )  
Near AVM Studio & Vadapalani Bus Stand**

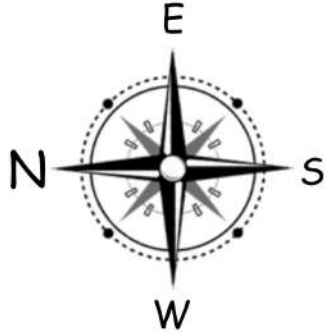
# Stilt Floor Plan



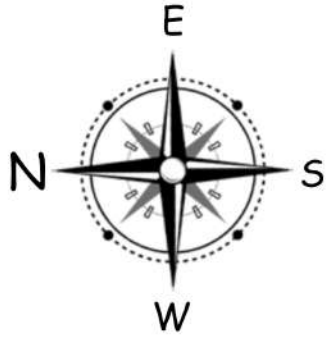
# First Floor Plan



# Typical Floor Plan 2nd,3rd&4th



# 5th Floor Plan

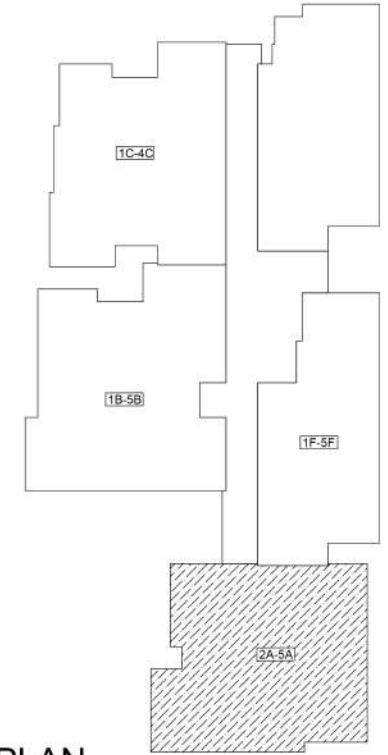


# Typical Floor Plan

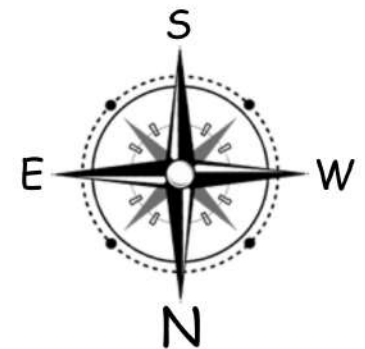
Type : 3BHK +3T

Unit No : A2 to A5

Size : 1373 Sqft



KEY PLAN

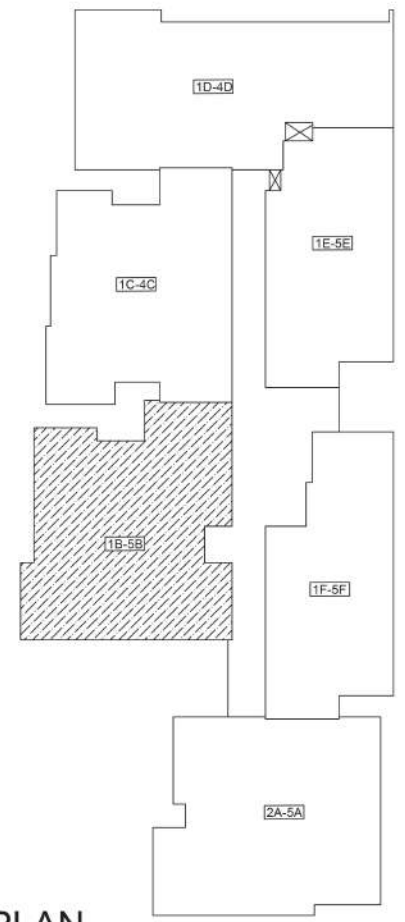
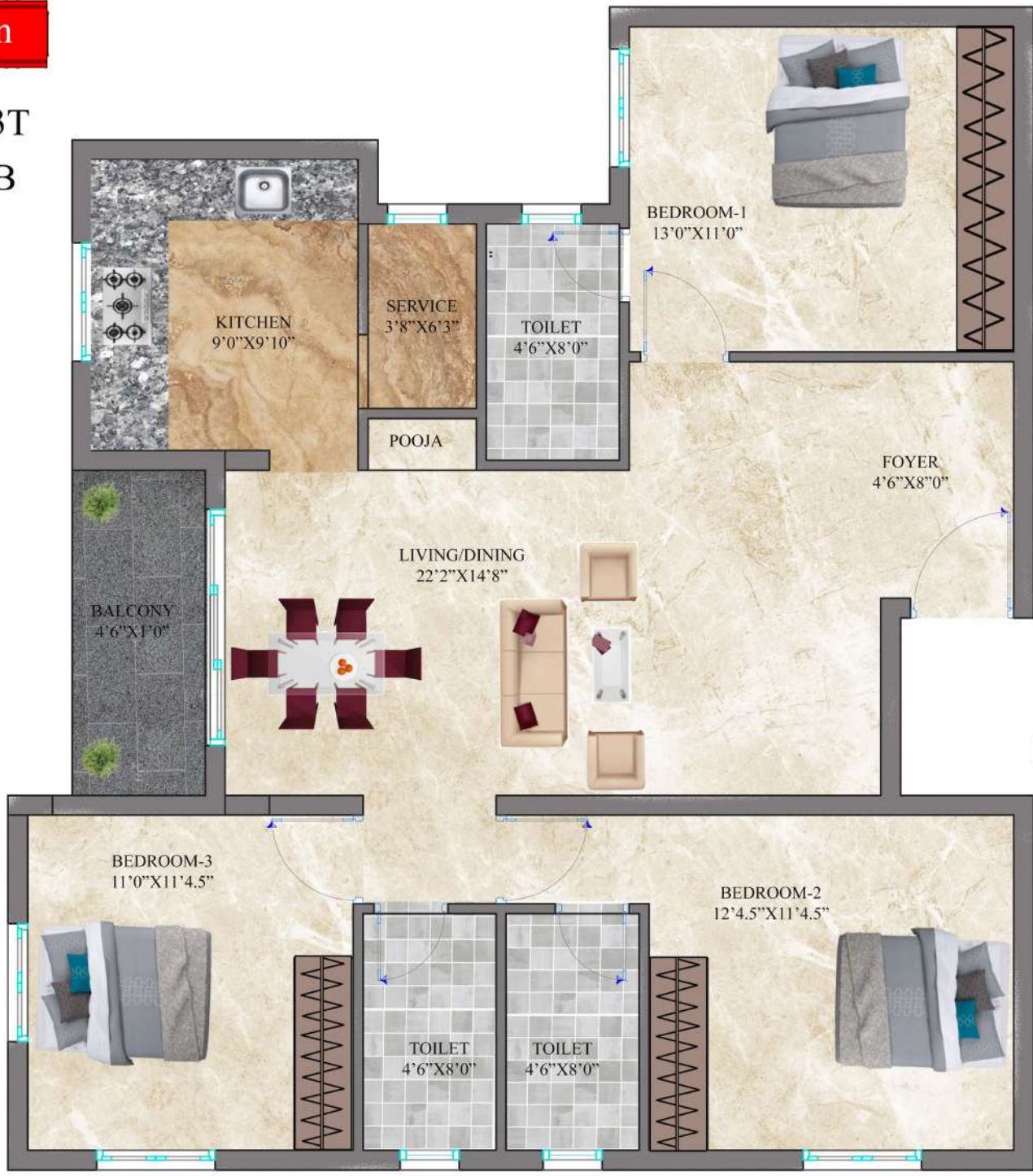


# Typical Floor Plan

Type : 3BHK +3T

Unit No : 1B to 5B

Size : 1470 Sqft



KEY PLAN

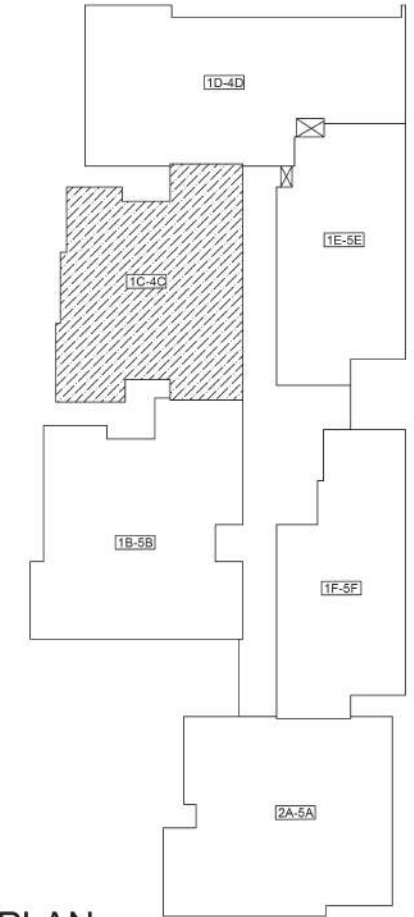


# Typical Floor Plan

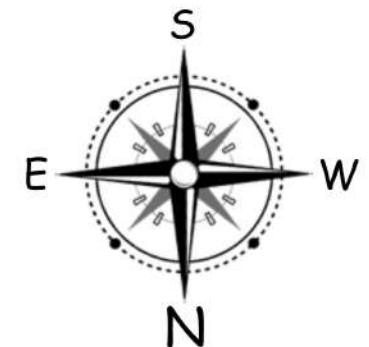
Type : 3BHK +2T

Unit No : 1C to 4C

Size : 1306 Sqft



KEY PLAN



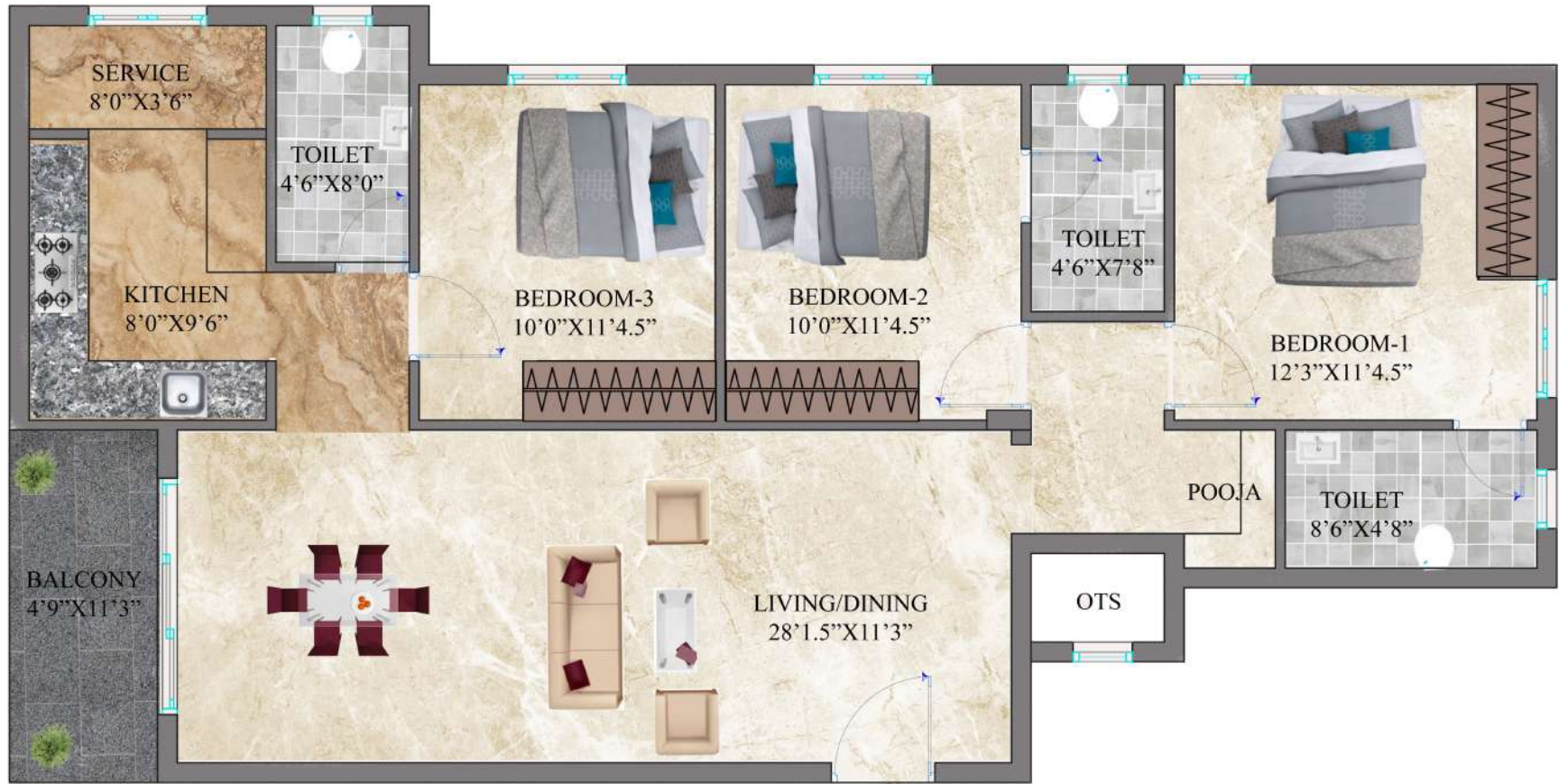


# Typical Floor Plan

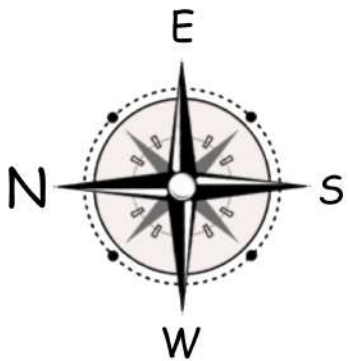
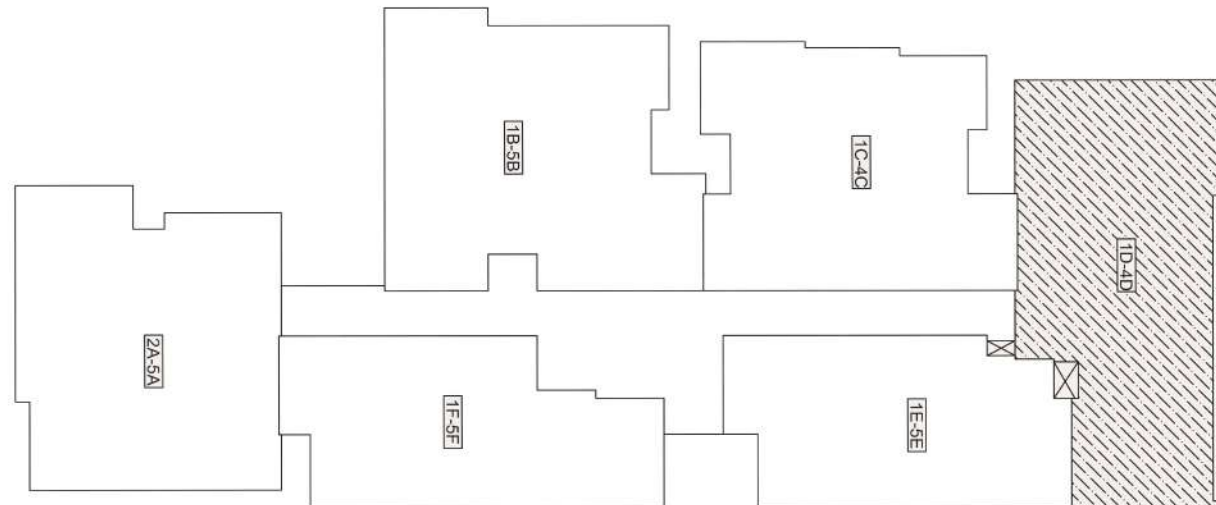
Type : 3BHK +3T

Unit No : 1D to 4D

Size : 1455 Sqft



## KEY PLAN

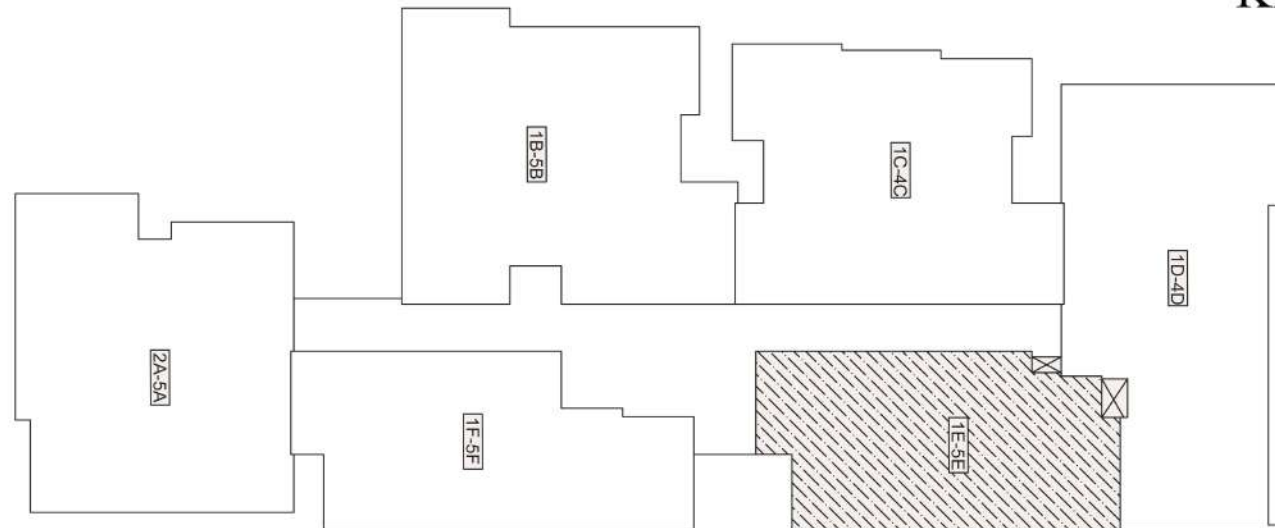
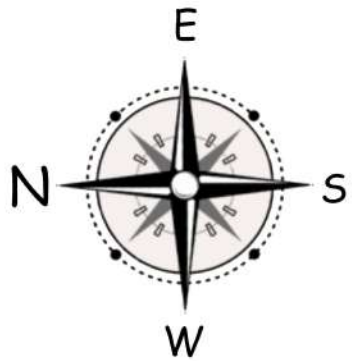


# Typical Floor Plan

Type : 2BHK +2T  
 Unit No : 1E to 5E  
 Size : 1028 Sqft



## KEY PLAN



# Typical Floor Plan

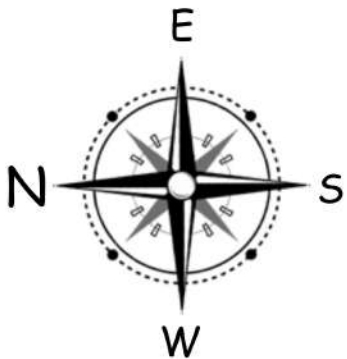
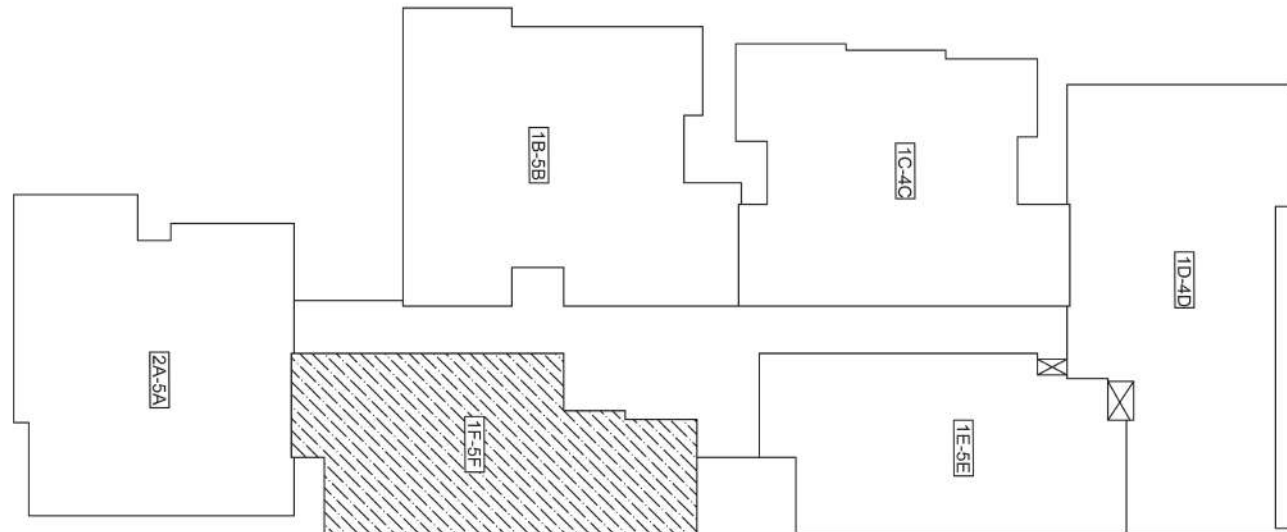
Type : 2BHK +2T

Unit No : 1F to 5F

Size : 1056 Sqft



## KEY PLAN



## SPECIFICATIONS & FEATURES



### Foundation

- As per Structural Drawing.

### Structure

- R.C.C Framed Structure with Columns, Beams and Slabs.

### Walls

- External Walls in AAC Blocks.
- Partition Walls in AAC Blocks.

### Plastering

- Internal Walls plastered in Cement Mortar.
- External Walls plastered in Cement Mortar.



### Windows

- Balcony: UPVC French doors with Sliding Glass shutters.
- Windows: UPVC Frames with Sliding Glass Shutters and MS Grill as per the Architect's Design.



### Kitchen & Utility Area

- Dado wall tiles upto 2' above Kitchen Platform.
- Granite platform with SS sink with drain board.
- Provision for Water Purification System.
- Provision for Washing Machine in Utility area.
- Provision for Dish Washer in Utility area.



### Bathrooms

- Wall Tiles up to false ceiling height.
- Kohler/ Jaquar / Roca or Equivalent wall mounted closets, Washbasins.
- Kohler/ Jaquar / Roca or Equivalent CP Fittings.
- Shower Partition in all Bathrooms.
- Provision for Horizontal shaped Geyser and Exhaust Fan.
- False Ceiling in Restrooms.



### Electrical

- Three Phase Power Supply with independent E.B meters.
- Modular Switches.
- Television Points in Living Room and All Bedrooms.
- Telephone Point in Living Room.
- Data Points in Living Room & All Bedrooms.
- Split AC provision with necessary copper and drainpipes in Dining Room & All Bedrooms

### Flooring

- 4 X 2 Vitrified Tiles for Living, Dining, Bedrooms and Kitchen.
- Anti-Skid Tiles in Balcony, Rest rooms and Utility area.

### Painting

- Interiors: Emulsion Premium Paint with Two Coat Asian / Berger / Dulux Putty.
- Exteriors: Texture with Asian / Berger / Dulux all Weather Coat Paints.

### Doors

- Engineered Wooden Door Frame and Shutter with Teak Wood Veneer finish for Main Door.
- Engineered Wooden Door Frame and Shutter for all the internal doors with Laminate Finish.
- Toilets: Laminated flush doors with water proof laminate in the inner side.

## COMMON AMENITIES



Covered / Open Car Park.



2 nos - 8 Passengers Lifts with ARD.



Gym.



Solar lighting for common areas.



Intercom Connection to the Security.



Common Toilet for Servants / Drivers.



100% Power Back up for the Common Areas, Lifts and Water Pumps.

- Common Area Flooring Granite / Designer Tiles / Kota stone.
- Paver Blocks for driveways.
- Anti-Termite Treatment.
- Multipurpose Hall.
- Video Door Phone, Security System with Access Cards.
- Provision for DTH.
- Closed Circuit Television (CCTV) surveillance, one camera will be provided each at entry gate, exit gate, facing the lobby entrances, entrance of Multipurpose Hall and Gym.
- Rainwater Harvesting as per CMWSSB Norms.
- Weather Coarse paint on terrace floor.

## Our Values



On-time Delivery



High-Grade Quality



Prime Locations



Reasonable Price



Amudha Civil Construction Pvt. Ltd.,

Plot No - 161 & 126, Amudha Square,

Kamaraj Avenue,

Ottiyambakkam Main Road, Sithalapakkam,  
Chennai - 600 131

E-mail : [contact@amudhacpl.com](mailto:contact@amudhacpl.com)

Web : [www.amudhacpl.com](http://www.amudhacpl.com)

Contact : 82200 17200

70920 60600